

Adjunct Curator of Malacology). Specializes in marine mollusks of Alaska to Oregon and tropical Indo-West Pacific. No cataloguing since 1968. Collections of Trevor Kincaid, P. B. Randolph, Ralph Jones, A. J. Kohn.

WESTERN CANADA

UNIVERSITY OF BRITISH COLUMBIA (Vancouver 8, British Columbia, Canada; Ian McT. Cowan, Professor of Zoology. Specializes in northwest coast of North America, particularly British Columbia, mostly collected by Dr. Cowan.

HAWAII

BERNICE PAUAAHI BISHOP MUSEUM (P.O. Box 6037), Honolulu, Hawaii 96818; Yoshio Kondo, Malacologist, Division of Malacology. Specialized collection of non-marine mollusks from Polynesia, Micronesia and parts of Melanesia without equal. Excellent Hawaiian, Line Island, and Micronesian marine collections. Collections include Gulick, Garrett, Pease, Cooke, Baldwin, Ancy, W. A. Bryan, Castle, Conde, Crampton, Emerson, Fulton, Harris, Judd, Lyman, McInerney, Meinecke, Merriam, Mighels, Munro, Moss, Newcomb, Oswald, Rixford, Spalding, Thaanum, Thurston, Thwing, Wilder, Williams, Arnemann, Blackman, Cheatham. Expedition materials are Pacific Entomological Survey of Marquesas (1929-1932), Mangarevan Expedition (1934), Samoan (1926), Micronesian (1935-1936), Lapham Fiji (1938), Western Samoa (1940), work in Solomons, Bismarcks, Masatierra, New Hebrides, Tonga, Samoa, Loyalty, Fiji, Society, and Marquesas (1966-1971).

APPENDIX II

MOLLUSK COLLECTION SURVEY

The attached questionnaire is part of a survey being carried out by the Council of Systematic Malacologists for the Association of Systematics Collections. It attempts to identify the malacological collection resources of the Americas, in regard to location, size, strengths, and degree of current use. The information will be used to prepare an overall assessment of the malacological collection resources available for systematic and other information uses; as partial raw data for identification of National Resource Collections by the Association of Systematics Collections; and to aid in preparation of a handbook outlining the systematic resources of the United States that will encompass many disciplines.

There are two parts to this survey. The first part should be answerable quickly and with minimal research effort. The second portion will require an expenditure of time, but the data requested will enable compiling a reasonably accurate total picture of malacological resources. Development of a total picture is a necessary preliminary to discovering major gaps in area or group coverage, to developing recommendations for additional support to collections and collecting activities, and to make known to the non-systematic community the extent and variety of collection resources.

Your cooperation in completing and returning AT LEAST THE FIRST PART OF THIS QUESTIONNAIRE NO LATER

THAN NOVEMBER 15TH will be greatly appreciated. The material should be sent to:

Dr. Alan Solem
Curator of Invertebrates
Field Museum of Natural History
Lake Shore Drive & Roosevelt Road
Chicago, Illinois 60605

Name of Institution

Mailing address

Name and title of respondee

Name of administrative unit in charge of mollusk collection

Name, title, academic degrees of person currently in charge of mollusk collection

If not a specialist on mollusks, please indicate field or research interest of person in current charge of collection. What was the last date on which a mollusk specialist was in charge of the collection? Who was this person?

Information on the collection

Mollusk collections generally are catalogued by lots. A lot is all material of one species collected at one locality at one time. It can contain 1 or 10 000 specimens. It would help greatly if you could report numbers in accord with the above definition. If this is impossible, please indicate on other sheets the method of filing material and how your estimates of collection size were derived.

What is the total number of catalogued sets of mollusks

What is the estimated number of uncatalogued lots of mollusks

What is the estimated total number of specimens (if known); how was this estimate obtained; if organized in a different way, please specify

Please describe briefly the major geographic area covered by the mollusk collection, whether it specializes in certain groups (please name), or list any outstanding aspects of the collection.

The following questions attempt to determine recent patterns of collection growth:

What is the average annual number of lots added during 1968 through 1972

What is the average annual number of lots from professional field work or expeditions

What is the average annual number of lots by purchase

What is the average annual number of lots from miscellaneous sources, gifts, exchanges, etc.

Date of last significant addition to collection (year)

Information on support facilities

Is a library on Mollusca actively maintained for use with the collection

State the number of mollusk journals now being subscribed to

How many scientists (curators) are employed full-time

How many supporting staff work with the collection:

Custodian

Secretary

Technical Assistant

Research Assistant

Others (specify)

Full time or
Part time (%)

Are other research labs associated directly with the collection, such as karyology, immunology, electrophoresis, etc. Please indicate the

types and personnel associated on separate sheets, if needed.

How many microscopes are available for use with the collection:

Dissecting ; compound ; other (specify)

What is the annual, non-salary budget, available for support of the collection and non-grant supported research and travel activities of the staff, i.e., the dollar support, except for salaries, given by the institution:

Under \$1 000 ; \$1 000-\$2 000 ; \$2 000-\$4 000 ;
\$4 000-\$8 000 ; \$8 000-\$12 000 ; over \$12 000

Is this being supplemented by research grants ; special restricted endowments ; private gifts

Information on advanced education uses

How many PhD students have either based their theses primarily on this collection or had a staff scientist chair or serve as committee member in the years 1970, 1971, 1972 and 1973

Please name recent PhD recipients in malacology during these years
Indicate ways, if any, collection is used in college or university research or teaching

PART TWO

This section is designed to provide detailed information on the strengths of individual collection coverage. When data is combined from all museums and major private collections, the first rough outline of overall strengths and weaknesses of malacological collections can emerge. Many of the following questions may not be applicable or impossible to answer without advice of a professional malacologist. If you are uncertain of how to answer a question,

please so indicate and return incomplete. Any information will be helpful in roughing out the national picture of collection data.

Origin of mollusk materials

Names of scientists or amateur collectors whose material is deposited in your collection. If known, include approximate number of lots from each source.

Major field trips or expeditions whose materials are deposited in this collection.

Areas of specialization

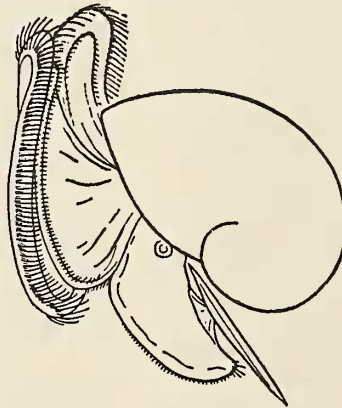
What percentage of collection is: marine ; fresh-water ; terrestrial

On the basis of your comparative knowledge of American molluscan collections, which areas of the collection do you feel represent one of the "five best collections" among all those in the United States. This can be either geographic or systematic in scope. For example, it could be "top collection of Conidae;" "excellent Ohio drainage unionids," "one of most comprehensive Florida marine," etc.

Geographic coverage of collection

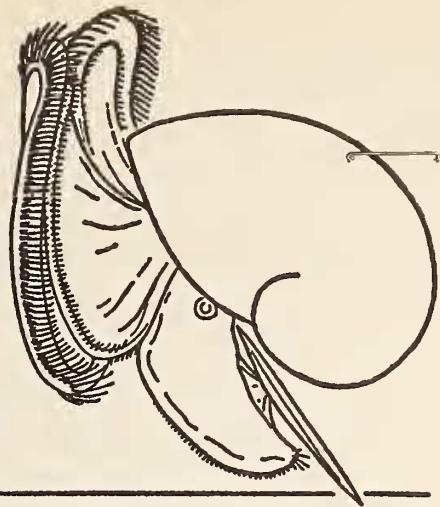
On the basis of your knowledge of the collection, would you indicate the extent of available materials for each area. This will have to be partly synoptic, but will help identify what areas are poorly represented in extant collections.

[The geographic charts of the questionnaire are not reproduced here]



594.05
V. 43
Mollu

THE VELIGER



A Quarterly published by
CALIFORNIA MALACOOLOGICAL SOCIETY, INC.
Berkeley, California

VOLUME 18

JANUARY 1, 1976

NUMBER 3

CONTENTS

Microstructure of the Veliger Shells of Gymnosomatous Pteropods (Gastropoda :
Opisthobranchia) (3 Plates)
CAROL M. LALLI & ROBERT J. CONOVER 237

Seasonal Patterns of Abundance and Reproduction of Euthecosomatous Pteropods
off Barbados, West Indies (7 Text figures)
FRED E. WELLS, JR. 241

Observations on Spawn, Embryonic Development, and Ecology of Some Caribbean
Lower Mesogastropoda (Mollusca). (25 Text figures)
KLAUS BANDEL 249

The Genus *Cerberilla* of Japan (Nudibranchia : Eolidioidea : Aeolidiidae), with
the Description of a New Species (1 Plate; 10 Text figures)
KIKUTARÔ BABA 272

Two New Permian Chitons from West Texas (Mollusca : Polyplacophora)
(4 Plates)
ALLYN G. SMITH 281

Morphological Correlations Between Dorid Nudibranch Predators and Sponge Prey
(1 Text figure)
STEPHEN A. BLOOM 289

A Preliminary Study of *Conus* Venom Protein (2 Plates)
LOURDES J. CRUZ, GLORIA CORPUZ & BALDOMERO M. OLIVERA 302

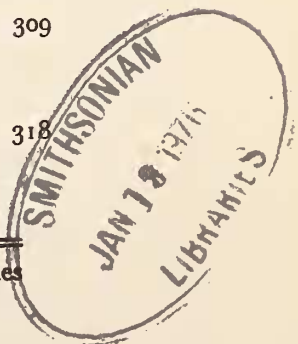
Censuses of Rocky Shore Prosobranchs from Washington and Costa Rica
(1 Text figure)
TOM M. SPIGHT 309

Genital Variation among Connecticut Populations of the Oyster Drill, *Urosalpinx*
cinerea Say (Prosobranchia : Muricidae) (1 Plate; 2 Text figures)
JOHN G. HALL & S. Y. FENG 318

[Continued on Inside Front Cover]

Note: The various taxa above species are indicated by the use of different type styles as shown by the following examples, and by increasing indentation.

ORDER, Suborder, DIVISION, Subdivision, SECTION,
SUPERFAMILY, FAMILY, Subfamily, Genus, (Subgenus)
New Taxa



CONTENTS — *Continued*

An Unusual Molluscan Assemblage from Venezuela (1 Plate; 4 Text figures)
 EDWARD J. PETUCH 322

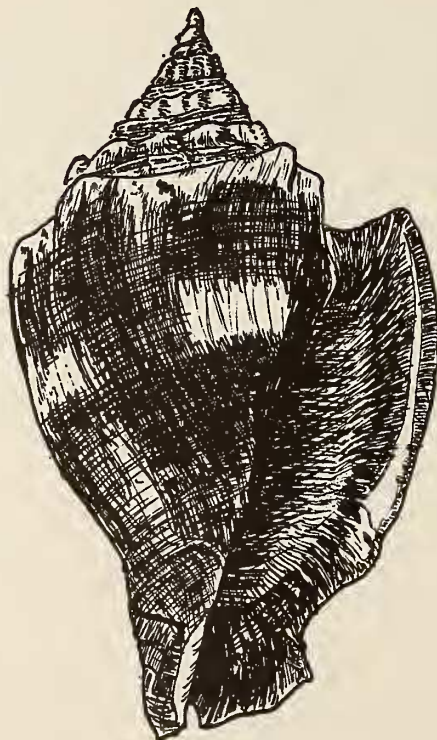
The Availability of Taxa Proposed in the MINUTES OF THE CONCHOLOGICAL CLUB
 OF SOUTHERN CALIFORNIA
 EUGENE V. COAN 326

Distribution and Population Density of *Elliptio complanata* (Mollusca) in Lake
 Pocotopaug, Connecticut (2 Text figures)
 J. BERTON FISHER & MICHAEL J. S. TEVESZ 332

Muricanthus radix and *Eupleura triquetra* (Gastropoda : Muricidae): New Range
 Records from Western Baja California, Mexico
 GEORGE E. RADWIN & GEORGE T. HEMINGWAY 339

NOTES & NEWS 341
 A Comment on Thaisid "Cannibalism" GEORGE T. HEMINGWAY

BOOKS, PERIODICALS & PAMPHLETS 345



Distributed free to Members of the California Malacozoological Society, Inc.
 Subscriptions (by Volume only) payable in advance to Calif. Malacozool. Soc., Inc.

Volume 18: \$25.- plus postage (\$1.- in U. S. A.; \$2.50 to P. U. A. S.; \$3.50 all other
 foreign Countries, incl. Canada). The same rates will apply to Volume 19.

Single copies this issue \$12.-. Postage additional.

Send subscription orders and all other correspondence (until further notice) to
 Dr. R. STOHLER, Editor, 1584 Milvia Street, Berkeley, CA(lifornia) 94709